

Plotting the Course: Asia/Europe /North America– TMT/TDS The Gateway to World Markets

**International Intermodal Connections between the
U.S. West Coast and South Texas**

Jorge E. Morales, Ops, Mgr.

Transmaritime, Inc.

Raymundo J. Perez, CHB, TDS, Inc.

Laredo and Pharr, Texas Terminals

Container Yard (CY)

Transmaritime-Laredo

Customer Service/SSL Agents

- Hanjin Shipping
- Maersk Line
- Hapag-Lloyd
- Hyundai Merchant Marine
- Evergreen
- MOL
- K-Line

Local Deliveries

- Store Door
- CY



Container Freight Station (CFS)

Transmaritime-Laredo

CFS Partners

- St. George Warehouse
- Nova
- Salson West
- Imperial
- AZ West

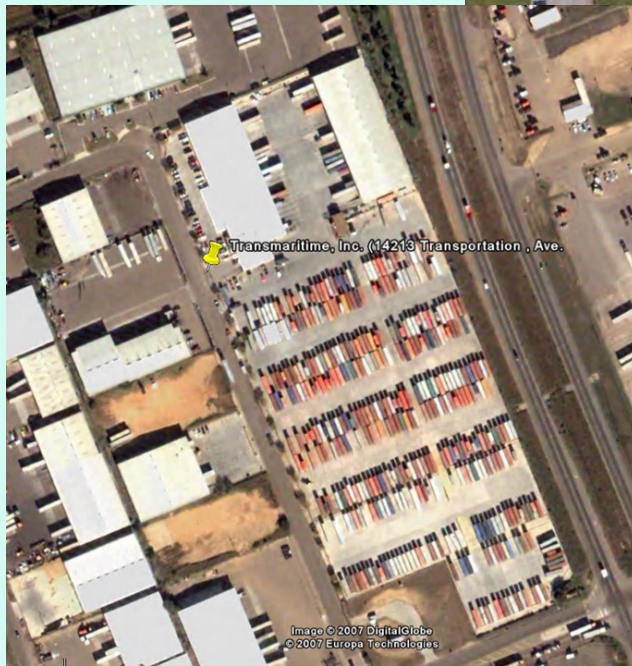
Air Cargo

- Air France
- Lufthansa
- American Airlines
- Continental Airlines
- Towne Air



Transmaritime Laredo

Terminal #1
(20 Acres)
Main Offices



Terminal Services

- Secured and Bonded Facility
- 24/7/365 Managed Facility
- Surveillance System
- Up to 80K Handling Capability



Transmaritime, Inc. 14213 Transportation



Single Truck Entrance/Exit

Transmaritime Laredo

Terminal #2
(40 Acres)
Loaded and Empty



Transmaritime, Inc. 22219 Mines Road

Transmaritime Laredo

Infrastructure

- Warehouse Capacity 220,000 sq/ft of Combined Warehouse Space
- CBP Permits: Class 3, Class 8, and Class 11 Services
- Bonded Yard Status for Oversized and/or Over Dimension Freight
- High Density Racking Systems
- Cross-dock and Heavy Equipment Handling



1472) - Transmaritime, Inc. - Yard

Transmaritime, Inc. 22219 Mines Road



Single Truck Entrance/Exit

In-House Fleet

- 12 Tractors
- UIIA Members
- Straight Trucks and Smaller 6 Ton Trucks
- MC-686192-C, MC-686192-B





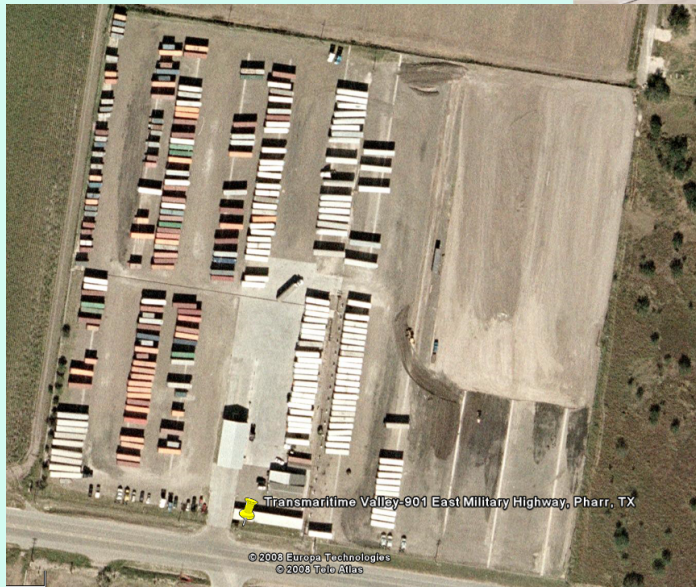
Truck Entrance/Exit –Physical Equipment Inspection Reports (EIR)



Truck Area Designated for DVIRs/ Minor Repairs

Transmaritime Pharr

Terminal Pharr
(20 Acres)



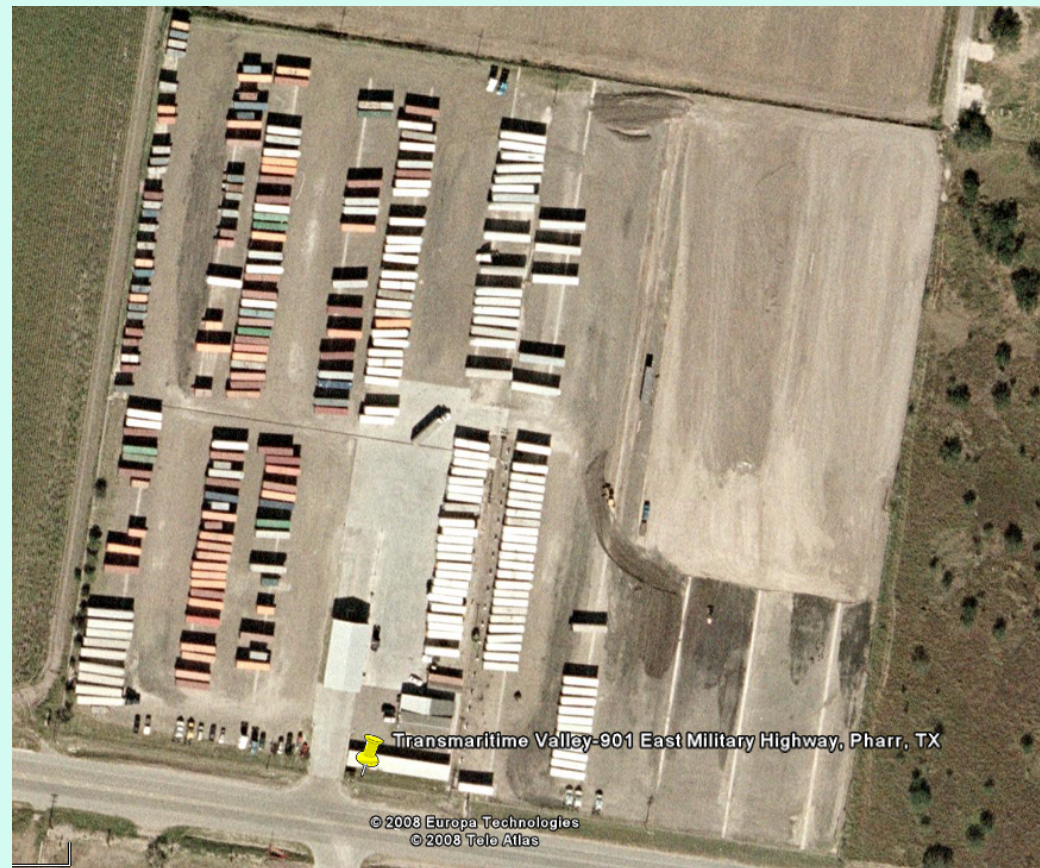
Transmaritime Valley-901 East Military Highway, Pharr, TX

© 2000 Europa Technologies
© 2000 Foto Atlas

Transmaritime, Inc.-Pharr

Terminal Services

- Secured and Bonded Facility
- 24/7/365 Managed Facility
- Surveillance System
- 40,000 Warehouse Space
- 42 Reefer Plugs (440 volt)





TRANSCONTINENTAL DISTRIBUTION SERVICES, INC.

DISTRIBUTION - FREIGHT FORWARDING - CUSTOMS BROKERAGE - LOGISTICS

Distribution Capabilities

- Inbound Receiving
- Storage Services
- Replenishment
- Pick-and-Pack Operations
- Integrated Shipping System
- ASN, EDI Tailored Solutions
- Basic Returns
- Inventory Management
- Reverse Logistics
- Quality Inspections
- Product Labeling
- Standardized Management Reports
- Value Added Services
- Internet Based Camera Surveillance

Strategic Partnership with TDS

- Licensed Customs Broker, Freight Forwarder and Bonded Carrier
- Strategies on Compliance Management to reduce cargo delays and costs associated with non-compliance to customs regulations
- Flexible EDI solutions help minimize data entry errors which can impede your shipment's progress
- Paperless communication with US Customs
- Ability to provide US Customs Bond and Mexican Cargo Insurance
- Email event notification of custom clearance
- Web Based Customs Reports
- State of the Art Reconciliation System
- Approved for ABI, RLF, ACH, QP In-Bonds and AES

TMT/TDS True Advantage

As the global economy has evolved, supply chains have grown more sophisticated, requiring advanced knowledge of complex international regulations.

Allow us the opportunity to demonstrate our service capabilities. We would be happy to discuss and provide you with a comprehensive proposal to ensure your success in moving international freight to production or market.

TMT/TDS True Advantage

- Maximize Container visibility via TMT Container Service
- Shorten the CY to Bonded / CFS warehouse delivery time.
- Avoid drayage costs to Bonded warehouse
- Shorten the US Customs clearance times
- Quicker IN / Out activity from Bonded Facilities due to seamless Account Representative Control.

WWW.TRANSMARITIME.COM



TRANSCONTINENTAL DISTRIBUTION SERVICES, INC.

DISTRIBUTION - FREIGHT FORWARDING - CUSTOMS BROKERAGE - LOGISTICS

THANK YOU

Questions???

If you would like a copy of this presentation, please send an e-mail to:

JORGE@TRANSMARITIME.COM

RAYMUNDO@TRANSMARIITIME.COM